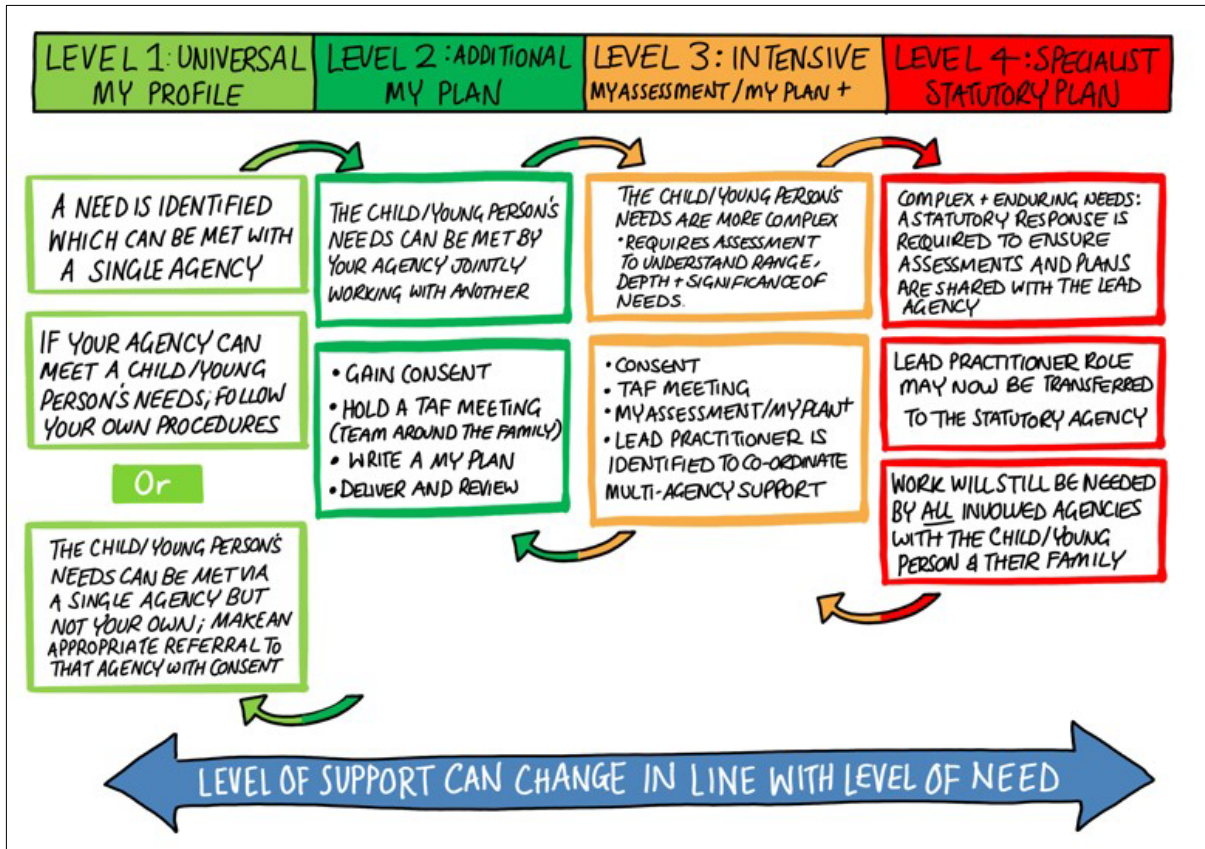


Graduated Pathway Practice Guidance

Parents/carers and young people - do you need support?

The Graduated Pathway of Early Help and Targeted Support is our early help assessment and planning process, which applies to the whole range of needs including:

- learning and development;
- social, emotional, health (physical and mental) and / or disability; and
- wider family and environment.



Visit the [Graduated Pathway Practice Guidance](#) for more information and guidance.

If you need help with the Graduated Pathway (for example, implementing a My Plan, My Assessment and My Plan+; coordinating TAF, or you need to understand the role of the lead practitioner), please contact early help via the Gloucestershire children's helpdesk:

☎ 01452 426565

✉ Childrenshelpdesk@gloucestershire.gov.uk